



COMMUNITY EDUCATION

WHERE LIFE AND LEARNING MEET

SPRING 2025 | April-June | Registration opens March 7



EDMONDS COLLEGE
COMMUNITY EDUCATION

ABC

REGISTRATION AND CONTACT INFORMATION

**STUDENTS CAN REGISTER ONLINE OR BY PHONE.
EARLY REGISTRATION IS ENCOURAGED.**

WHERE LIFE AND LEARNING MEET.

Community Education offers small and inviting personal enrichment classes in a fun and supportive environment. Check out our in-person and online classes in visual arts, music, language, financial planning, and more.

**REGISTRATION OPENS MARCH 7.
QUARTER BEGINS APRIL 7.**

To register online, please visit edmonds.edu/comed or call 425.640.1243. Early registration is encouraged.



Register!



Join our mailing list

WITHDRAWALS AND REFUND POLICIES

Refund requests must be received by phone or email at least two business days prior to the start of class. A \$10 drop fee will be retained for each refunded class. No refunds will be made after that date. There are no partial refunds.

Students will be notified in advance if a class is canceled or rescheduled for any reason. We encourage students to check the college website for updates or closures.



INTERESTED IN TEACHING FOR COMED?

Do you have a passion for a topic you want to share? We want to hear from you!

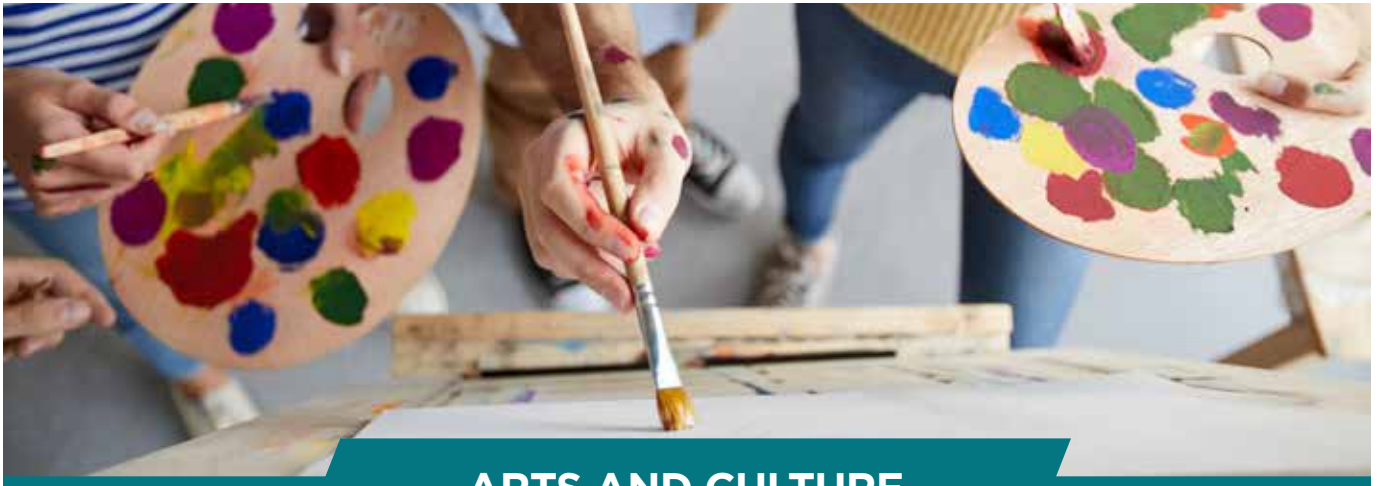
We are interested in any and every topic, especially Ceramics, so please don't hesitate to contact us if you have questions. Our staff is more than willing to discuss your ideas for a class with Edmonds College!

Email comed@edmonds.edu to receive a Course Proposal Form link. In your initial email, please include the following materials:

- Your current resume and professional references (not related to you)
- Any marketing materials you might use to promote the course you're proposing
- Digital images of your work, when applicable (visual art for photography class)

Your materials will be reviewed to determine if your course proposal(s) are a good match for Community Education.

You will be notified regarding the status of your proposal within two weeks. If the proposal is accepted, Community Education will schedule an interview to discuss your class, prior teaching experience, and Community Education policies. We will also request a course outline/syllabus at that time.



ARTS AND CULTURE



ACRYLIC PAINTING

Painting by instructor Pete Barth

Acrylic Painting is a fun, wonderful, versatile paint medium that can provide a lifetime of enjoyment! In this class, you will learn how to express yourself in this colorful medium! You'll be learning the techniques of Acrylic Painting: blending, texturizing, brush handling, detailing, stippling, dabbing, glazing, wet in wet, dry brushing, etc! You'll also learn about color mixing, complementary colors, warm and cool, hue, value, and intensity and proportions! You will be surprised how quickly your skills will improve by observing and painting along with step-by-step class presentations, which make it easy to understand and put these techniques into practice! Once you learn these skills, you'll find them becoming second nature and greatly increase your ability to paint the world around you! Please see the supply list on our website

Fee: \$165

6 Weds., 4/16-5/21 | 6:45-8:45 p.m.

In Person, Room TBD

Barth, Peter



CRAFTING WITH PAPER

Unleash your creativity in this hands-on art class focused on sustainable paper crafting techniques. Learn how to transform everyday materials, such as cereal boxes, magazines, newspapers, and recycled paper, into unique and artistic creations. Through the use of natural dyeing techniques, simple use of markers and water, and paper collaging, you'll explore ways to make beautiful, one-of-a-kind items like handmade greeting cards, glue journals, gift tags, and other embellishments. You'll also discover the art of crafting paper beads and bookmarks from items commonly found in your recycling bin. This course is perfect for those looking to spark creativity, practice eco-conscious art, and create stunning, personalized crafts. Join us to explore sustainable, resourceful ways to express your artistic vision! All materials will be provided, but feel free to bring any old wrapping paper, tissue paper, glossy magazines or newspaper inserts that you may have in your house.

Fee: \$79

2 Sat., 5/10-5/17 | 9 a.m.-12 p.m.

In Person, Room TBD

Acosta-Pieters, Martha



DRAWING & SKETCHING

Drawing by instructor Pete Barth

Drawing is the fundamental basis of all visual art and can provide a lifetime of enjoyment. You'll significantly increase your imagination, creativity, and perception through the practice of drawing! In this class, you'll learn the fundamentals of drawing: 3-dimensionality, light, shadow, proportions, details, and perspective. You'll learn to draw many subjects, including animals, nature, people, and still lives. You'll be surprised how quickly your skills will develop, by observing and drawing along with step-by-step class presentations, which make it easy to understand and put these techniques into practice. Once you learn these skills, you'll find them becoming second nature and significantly increase your ability to represent the world around you! Please see the supply list on our website.

Fee: \$159

Barth, Peter

6 Mon., 4/14-5/19 | 6:45-8:45 p.m.

In Person, Room TBD

EDMONDS COLLEGE CONCERT BAND

Woodwinds, brass, and percussion musicians of all levels are welcome! The Edmonds College Concert Band provides large ensemble experience for instrumentalists and gives South Snohomish County a local concert band. Members of the community are invited to join as Megan Vinther directs. The band will meet for rehearsals and one performance each quarter. Enrollment for this class remains open until Jan. 31st.

Fee: \$99

Vinther, Megan

10 Tues., 4/8-6/10 | 7-9:30 p.m.

MIC 114

EDMONDS COLLEGE JAZZ & SALSA BAND

Participate in rehearsals and performance of traditional jazz band and authentic salsa repertoire. We welcome trumpets, trombones, saxophones, piano, guitar, bass, drumset, and percussion. The band enjoys relationships with local professionals who serve as guest artists and clinicians, providing instruction and guidance in big band and salsa styles! **Prior to registering**, please contact john.sanders@edmonds.edu for an audition and more information.

Fee: \$99

Sanders, John

10 Mon., 4/7-6/16 | 7-9:30 p.m.

MIC 114

No class on 5/26.



EXPECTATIONS VS. CULTURE SHOCK WHEN TRAVELING TO ITALY

Are you planning to visit Italy? Are you thinking about studying, working, or even moving there? This is the class for you! With help from a native, learn to navigate the delights and contradictions of Italy and sharpen your awareness of intercultural communication to make the most of your trip.

Fee: \$75

Sestilli-Strauss, Fausta

2 Sat., 4/19-4/26 | 10 a.m.-12 p.m.

In Person, Room TBD



EXPECTATIONS VS. CULTURE SHOCK WHEN TRAVELING TO FRANCE

What makes the French... French? Are Parisians really rude? Perspectives will help you better understand the French way of life so you can enjoy your trip to the most visited country in the world while remaining a respectful tourist.

Fee: \$75 Sestilli-Strauss, Fausta
2 Sat., 6/7-6/14 | 10 a.m.-12 p.m.
In Person, Room TBD



FABRIC AND FIBER UPCYCLING

Whether you are a beginner, a seasoned crafter, or have never done any crafts before, join us on this fabric and fiber adventure. Over two weekends, you will learn how to repurpose and upcycle old clothes, use simple embellishments such as buttons, beads, and yarn to create unique and personalized creations. Learn how to mix and match colors, fabrics, and yarn to create designs that reflect your style. Please bring scissors and an old T-shirt. The instructor will provide the rest of the materials, including one canvas board per student.

Fee: \$79 Acosta-Pieters, Martha
2 Sat., 4/26-5/3 | 9 a.m.-12 p.m. In Person, Room TBD

GRUNGE 101

In the fall of 1991 the “Seattle Scene” or “Grunge Scene” hit the top of the charts and changed the rock music scene forever. Nirvana, Soundgarden, and Pearl Jam all released classic records in the same few weeks as Metallica, Guns ‘n Roses, and the Red Hot Chili Peppers, joining them as platinum-selling acts and putting grunge into a permanent place in the pop culture and fabric of the era. How did we get there? What was that period like? What was the result and legacy?

Fee: \$59 Lageson, Jeffrey
2 Weds., 5/14-5/21 | 6-8 p.m. In Person, Room TBD



INTRODUCTION TO VOICEOVERS

Explore the craft of voiceovers! Discover current trends, opportunities, and tools to succeed in this growing remote working industry. Read an actual script and receive coaching from your instructor, a professional voice actor, to improve your delivery. You’ll receive a professional voiceover evaluation later in a follow-up call. This is a one-time, 90-minute introductory class. Learn more at

www.voicesforall.com/ooo. For students 18 and over. Upon registration you will be contacted by VFA to schedule your class for a day and time of your convenience.

Requirements: Students must have internet access and video chatting capabilities using a method such as: Zoom, Skype (Win/Mac/Mobile), or iChat/FaceTime (Mac/iOS).

Fee: \$49 Voices for All
To be arranged. ONLINE

LEARN TO PLAY DUNGEONS & DRAGONS

A learn-to-play course that will take time to teach the rules and concepts of the RPG game D&D, with an opportunity to play an intro adventure then. No materials are needed, as character sheets, basic rules, and other gaming needs will be available for use.

Fee: \$59

2 Weds., 4/16-4/23 | 6-8 p.m.

Lageson, Jeffrey
In Person, Room

SPRING PAINTING SERIES

Join the Spring Painting Series and create a gallery of artwork! In each lesson, students will paint a different spring-themed art piece with step-by-step instruction using acrylic paints. Students will learn techniques and best practices to nurture the artists in all of them, learn interesting facts about the weekly painting subjects, and gain confidence to explore painting and artistic freedom further. This course is geared toward beginner students, and no experience is necessary!

Fee: \$199

5 Weds., 4/30-5/28 | 6-8 p.m.

Rodriguez, Erick
ONLINE

SPRING PHOTOGRAPHY CHALLENGE

Feel like something is missing in your photography? Explore photography by learning to visualize a photograph and then create it through lighting, composition, and exposure. This class focuses on discovering new ways of seeing and an artistic approach to composition. There will be lectures, examples, and weekly assignments. The instructor will critique assignments and help students grow their photography knowledge. Some topics covered will be macro photography, wildlife, close-up portraiture, tips for shooting moving subjects, and seasonal light changes.

Fee: \$175

6 Tues., 4/29-6/3 | 7-9 p.m.

Ulvestad, Karen
ONLINE



Washington SBDC located at Edmonds College in Lynnwood
**Helping Small Businesses
START, GROW & SUCCEED**

Who We Are

The Washington SBDC is your resource for expert advising, management training and market intelligence.

In more than 30 communities across the state, SBDC business advisors provide no-cost, one-on-one, confidential advising to help entrepreneurs and small business owners start, strengthen or buy/sell a business.

What We Do

Helping you work **on** your business, not just **in** your business.

What We Do

- Planning or growing your business
- Analyzing financial statements
- Acquiring capital and managing cash flow
- Buying or selling businesses
- Exporting to markets around the world
- Market research
- Business systems and record keeping
- Getting and keeping customers
- Cost-cutting strategies
- Finding and keeping qualified employees
- Succession planning
- Tech commercialization

Contact us and get started on your path to success today!

WSBDC.org | (833) 492-7232 | Washington@wsbdc.org



WASHINGTON STATE
UNIVERSITY

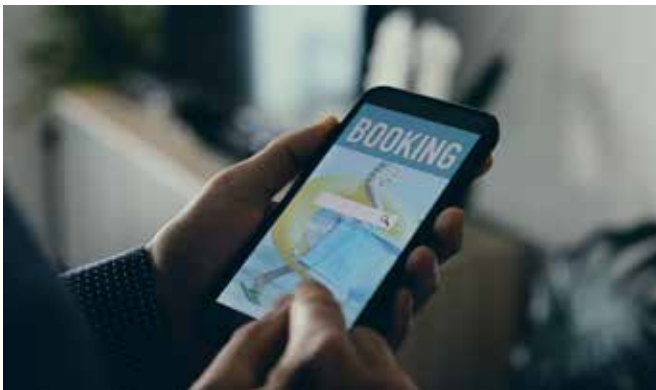


EDMONDS
COLLEGE

The Washington SBDC network, hosted by Washington State University, is an accredited member of America's SBDC. Funded in part through a cooperative agreement with the U.S. Small Business Administration, institutions of higher education, economic development organizations and other public and private funding partners.



CAREER AND BUSINESS



AIRBNB 101: LEARN FROM A SUPERHOST

Unlock the secrets to creating a successful Airbnb rental with insights from a seasoned superhost. This two-hour seminar provides a step-by-step guide to launching and managing your Airbnb, covering everything from market research and legal considerations to setting up your space and maximizing bookings. Learn practical strategies, insider tips, and proven techniques to transform your property into a thriving short-term rental business. Whether starting from scratch or looking to refine your hosting skills, this seminar will equip you with the knowledge and confidence to achieve Airbnb success.

Fee: \$49 **Ayre, Jennifer**
1 Weds., 4/9 | 7-9 p.m. OR 1 Weds., 5/21 | 7-9 p.m.
In Person, Room TBD

EXCEL I: EXCEL IN YOUR WORLD! THE EXPLORATION OF SPREADSHEETS

Excel is an amazing, powerhouse program that can be used in many parts of our daily lives! In this introductory class, we will learn how Excel is set up, enter and format data, execute basic formulas, and then get into working with some of the powerful features available in Excel. Required: Access to MS Office Excel for Windows (version 2016 or higher).

Fee: \$85
3 Weds., 4/23-5/7 | 6-8 p.m.

Simerly, Mary
ONLINE

EXCEL II: FUNCTIONS & PIVOTS

Continue your Excel journey in the second class in the series and enhance your comfort level when working with data. This class will teach you how to work with several functions, sort and filter data, apply conditional formatting, and start working with PivotTables. Prerequisite: Excel I or working knowledge of topics covered in Excel 1. Must have access to MS Office Excel for Windows (version 2016 or higher).

Fee: \$85
3 Weds., 5/14-5/28 | 6-8 p.m.

Simerly, Mary
ONLINE

PODCASTING 101

Learn podcasting from Anthem Award-winning podcast producer John Yeager! This course will include a background to podcasting, trends in the podcasting industry, and a discussion on why you should or shouldn't produce a podcast. Each class will feature a guest speaker with real-world podcasting experience, along with plenty of time for questions.

Fee: \$109
3 Sat., 4/12-4/26 | 10 a.m.-12 p.m.

Yeager, John Allen
ONLINE



HOME, HEALTH, AND HEARTH

BEFORE YOU GO - END OF LIFE PLANNING WORKSHOP

“We’re all going to die, and we don’t know when,” says Rev. Bodhi Be, a mentor of the instructor and director of perhaps the only non-profit funeral home. Given that important and poignant truth, there are many things we can do to prepare ourselves and save our loved ones time and stress.

In this class, we will explore legal documentation, practical considerations, relational networks, wishes for your memorial and your body’s disposition, and much more. All of this information is valuable to anyone regardless of age or state of health. The instructor will follow up with a checklist and a document with extensive resources to help you complete and maintain your end-of-life preparations.

Fee: \$59

2 Sat., 5/3-5/10 | 11 a.m.-12:30 p.m.

Matthews, Wakil

ONLINE



INTRODUCTION TO BACKYARD PERMACULTURE


Explore the principles of permaculture and discover how to apply sustainable, regenerative design to a garden or other outdoor space. In this two-hour introductory class, participants will learn how to facilitate healthy, low-maintenance ecosystems that work in harmony with nature. Whether you have a small garden, a large yard, or a community space, this class will provide you with a solid starting point for making any green space more productive, resilient, and environmentally friendly. No prior experience is required—anyone with an interest in gardening is welcome.

Fee: \$49

1 Mon., 5/19 | 6-8 p.m

Wheeler, Cheryl

ONLINE




Let Your Voice Be Heard

Edmonds Storytellers: Spoken Word Showcase
Common Humanity, Justice, and Anti-Racism

Black Box Theatre | Thursday, April 17, 4 p.m.

What is your story? What can your story teach us? Poetry is a powerful tool that humans have to carry their stories to many ears over many years. Put poetry and rhythm together, and you have “spoken word.”

For more information, visit
edmonds.edu/campus-life/spoken-word-showcase.html
or sign up by scanning the QR code.



MANAGING COMMON INTEREST COMMUNITIES

RCW 64.90, WASHINGTON UNIFORM COMMON INTEREST OWNERSHIP ACT (WUCIOA)

This act references four distinct common interest communities. The paragraph numbers refer to subparagraphs under RCW 64.90.10 and distinctly define each of the different common interest communities. (11) Condominium, (15) Cooperative, (33) Miscellaneous, and (37) Plat or HOA. Every common interest community is governed by a board, defined by RCW 64.90.010 (6). While there are obvious differences in the types of such communities listed in the RCW, the governance of these communities has very little difference. Consequently, if you live in any of these described communities or are contemplating a move into one of them, this course will address the governance and management needs of each of them as well as the role of ownership. Specific emphasis will be given to managing finances with a complete and detailed presentation on managing capital reserves.

Fee: \$89

Johnson, Ernie

3 Sat., 4/12-4/26 | 10 a.m.-12:30 p.m.

In Person, Room TBD



SUCCESSFUL STRATEGIES FOR FOOD AND WINE PAIRING

Demystify wine, wine tasting, and food and wine pairing. Learn where wines get their flavor and structural characteristics and how to pair them with foods to enhance your culinary and dining experiences.

Students must be 21 years of age to attend the class.

The price includes a \$30 fee for food and wine.

Fee: \$85

Vaughters, Michelle

1 Fri., 5/30 | 6-8:30 p.m.

In Person, Room TBD



THE GREEN WORLD AROUND US

Immerse yourself in the fascinating world of plants through this interdisciplinary course that blends botany, plant taxonomy, and ethnobotany with cultural perspectives. This course will help you cultivate a deep appreciation for the diversity of plant life and its integral role in human society. This course is designed for students from all backgrounds.

Key Topics Include:

- **Plant Appreciation:** Discover the beauty and complexity of the plant kingdom, learning to identify various species and understand their ecological roles.
- **Botany Basics:** Explore the fundamental principles of plant biology, including anatomy, physiology, and reproduction, while gaining hands-on experience in the field.
- **Plant Taxonomy:** Delve into the science of how plants are classified.
- **Ethnobotany and Culture:** Investigate the relationships between plants and cultures around the world. Study how different societies utilize plants for food, medicine, and rituals, and explore contemporary issues related to conservation and sustainability.
- **Field Studies:** Engage in field trips and laboratory activities that allow for practical experience in plant identification, data collection, and the application of ethnobotanical knowledge.
- **Required supplies:** Pen/pencil and a waterproof notebook for note-taking.

Fee: \$149

Fong, Mike

5 Sat., 4/12-5/10 | 10 a.m.-12:30 p.m.

In Person, Room TBD



FOREIGN LANGUAGES

JAPANESE: BEGINNING CONVERSATIONAL

Speak Japanese! This class is an introduction to Japanese language and culture designed for students with little to no experience. We will focus on conversational skills, pronunciation, everyday expressions, basic vocabulary, simple sentence structure, and basic grammar. Students are expected to review and practice between classes. Reading and writing are not covered. An email address is required to receive information on the Zoom meetings.

Fee: \$139 Oda, Earle
8 Thu., 4/10-5/29 | 6-7:15 p.m. ONLINE

SPANISH: BEGINNING

It's never too late to develop your foreign language skills! Impress your friends and colleagues by developing your conversational ability in real-life situations in your community or while traveling. Study basic pronunciation and grammatical structure in a nurturing, interactive environment.

Recommended for people who have never taken Spanish.

Required Book: "Spanish for Mastery 1, Que tal?" by VALETTE & VALETTE, ISBN nr: 0-669-31311-4. and the workbook "Spanish for Mastery 1" ISBN nr.: 0-669-31339-4. The book is available online at archive.org either to purchase, or borrow via a free account.

Fee: \$269 Baird, Monica
10 Tues., 4/8-6/10 | 1-3 p.m.
OR 10 Thurs., 4/10-6/12 | 6-8 p.m.



ONLINE



JAPANESE: BEGINNING READING & WRITING

The instructor updated the description to, "Learn how to read and write Japanese! A beginning course dedicated to learning two essential types of Japanese writing systems - Hiragana and Katakana. Completion of (or concurrent registration in) Japanese: Beginning Conversational OR familiarity with Japanese sounds is required. Students are expected to practice on their own through repetition and memorization. This course will complement the spoken language and lay the foundation for learning Kanji (Chinese characters). The instructor recommends that students purchase a Japanese Stationary Genkouyoushi Writing Notebook (available on Amazon for approximately \$10) or a similar notebook (not required). An email address is required to receive information on the Zoom meetings.

Fee: \$139 Oda, Earle
8 Weds., 4/9-5/28 | 6-7:15 p.m. ONLINE



SPANISH: INTERMEDIATE 1

Continue with Spanish conversation and grammar skills and learn to conjugate verbs in present, past, and future. Prerequisite: Spanish: Beginning OR must have mastered the present tense conjugations of the REGULAR and IRREGULAR AR, ER, IR verbs.

Required Book: "Spanish for Mastery 1, Que tal?" by VALETTE & VALETTE, ISBN nr: 0-669-31311-4. and the workbook "Spanish for Mastery 1" ISBN nr.: 0-669-31339-4. The book is available online at archive.org either to purchase, or borrow via a free account.



Fee: \$269
10 Weds., 4/9-6/11 | 6-8 p.m.

Baird, Monica
ONLINE

SPANISH: INTERMEDIATE 2

Continue learning by improving your useful vocabulary, conversation, and grammar skills using the present, past, and future tenses.

Prerequisite: Spanish: Intermediate 1, OR must have mastered the present and past tense conjugations for the REGULAR and IRREGULAR AR, ER, IR verbs.

Required Book: "AVENTURAS primer curso de lengua española," student edition, by Jose A. Blanco and Philip Redwine Donley (ISBN: 978-1618570536).

Fee: \$249
9 Mon., 4/7-6/9 | 6-8 p.m.
No class on 5/26.

Baird, Monica
ONLINE

SPANISH: INTERMEDIATE 3

Refine your vocabulary, pronunciation, grammar, and ability to master routine conversations.

Prerequisite: Spanish: Intermediate 2.

Required Books: "Spanish for Mastery 2: Entre Nosotros" by VALETTE & VALETTE ISBN: 0669-31341-6 and the Expanded workbook "Spanish for Mastery 2: Entre Nosotros" by VALETTE & VALETTE ISBN: 0-669-31363-7.

Fee: \$269
10 Tues., 4/8-6/10 | 6-8 p.m.

Baird, Monica
ONLINE



Community Education is proud to partner with ed2go to offer personal enrichment and professional development courses in a convenient online environment.

Use the QR code to check out our current offerings. Most classes start every six weeks!





WRITING

AN OVERVIEW OF SELF-PUBLISHING WITH AMAZON

If you're curious about self-publishing through Amazon.com but feel overwhelmed by the information needed, this two-hour course with G.G. Silverman will break the topic into digestible parts so you can feel more confident on your self-publishing journey. Whether your book is large or small, we'll cover what Amazon Publishing offers (and what it doesn't), as well as the decisions and actions you'll need to take when moving forward. We'll also discuss common pitfalls. Attendees will leave with a general understanding of the steps required to get their books on Amazon, and a checklist to guide them through the process. Bring your questions: generous time will be allotted for Q&A!

Fee: \$49
1 Mon., 4/14 | 6-8 p.m.

Silverman, G.G.
Online

COMMON PUBLISHING SCAMS & HOW TO AVOID THEM

For every writer who dreams of being published, there are myriad fraudsters who'll take your money and run. How does a writer know the difference between scams and real opportunities? How does a writer protect themselves? In this informative two-hour class, seasoned writer & publishing veteran G.G. Silverman will introduce you to some very common publishing scams and will teach you strategies for due diligence and self-defense. Attendees will leave with an understanding of how to spot a scam and more confidence about setting foot in the wild world of publishing.

Fee: \$49
1 Mon., 4/7 | 6-8 p.m.

Silverman, G.G.
Online



INTRODUCTION TO SCREENWRITING

A great script begins with personality! In this introductory screenwriting course, write the script that only you can write and learn how to share it with the world. Students will explore how to create memorable characters, build worlds for them, tell their stories in a format designed for the screen, and share their work in "table reads." Writers will receive helpful feedback while learning the classic Hollywood formulas and requirements for screenwriting.

Fee: \$189
6 Tues., 4/15 -5/20 | 6-8:30 p.m.

Platter, Stephanie
Online

SPRING YOUTH CAMP

AT EDMONDS COLLEGE, YOUTH CAMPS AREN'T JUST FOR SUMMER!

Check out our quarterly youth camps using the QR code or contact youth.camps@edmonds.edu.

Please note: When registering online, please create a profile for your child (using their name and date of birth). The profile CANNOT be under the parent's name and date of birth.



COLOR PENCILS AND OIL PASTELS (DRAWING IN COLOR)

Have you ever wanted to draw in color? Colored pencils and oil pastels are wonderful media that combine the detail you can get in drawing with the vibrant colors available in painting. In this class, you will learn the basic skills of colored pencils and oil pastels and apply them to create beautiful, finished colored pencil drawings!

This class is geared toward children and teens ages 8-14.

Fee: \$189

Barth, Peter

5 Sat., 4/12-5/10 | 1:45-3:45 p.m.

In Person, Room TBD



DRAWING AND PAINTING ANIMALS (IN PENCIL, PEN, AND WATERCOLOR)

Learn to draw and paint (in pencil, pen, and watercolor) the fascinating world of Animals in this engaging and informative class! Through the development of keen observational skills of the natural world, you'll learn to realistically represent animal life in drawing and painting!

This class is designed for children and teens age 8-14

Fee: \$189

Barth, Peter

5 Sat., 4/19-5/17 | 10:45 a.m.-12:45 p.m.

In Person, Room TBD

PET PORTRAITS

Have you ever wanted to learn how to draw pets? In this exciting class, you'll learn how to draw cats and dogs, and pets in a variety of poses, and then you'll learn how to draw your own pets (any type of pet you'd like)! You'll also learn about animal anatomy and how to depict pets with lighting, highlights, shadows, and details. By the end of class, you will have created several fascinating pet portraits!

This class is designed for children and teens age 8-14

Fee: \$169

Barth, Peter

4 Sat., 5/24-6/14 | 10:45 a.m.-12:45 p.m.

In Person, Room TBD

SCI-FI AND FANTASY ILLUSTRATIONS

Fantasy and Sci-Fi Art is such a fascinating subject! This class teaches you to draw and paint Sci-Fi and fantasy creatures and scenes. You'll learn the anatomy and proportions of fantasy creatures and how to depict creatures in action. Additionally, you'll be learning to draw three dimensionally and use light, shadow, detail, and color to make fantasy creature drawings and paintings. You'll be learning to combine these skills to depict a variety of creatures, such as dragons, dinosaurs, mecha, robots, trolls, shape-shifters, cyborgs, mutants, insectoids, animal and multi-creature hybrids. You will also learn to illustrate all the amazing things they do, from running, flying, battling foes, rescuing heroes, breathing fire, and more. In this exciting class, you will learn to develop and draw your own sci-fi and fantasy creatures and scenes!

Fee: \$189

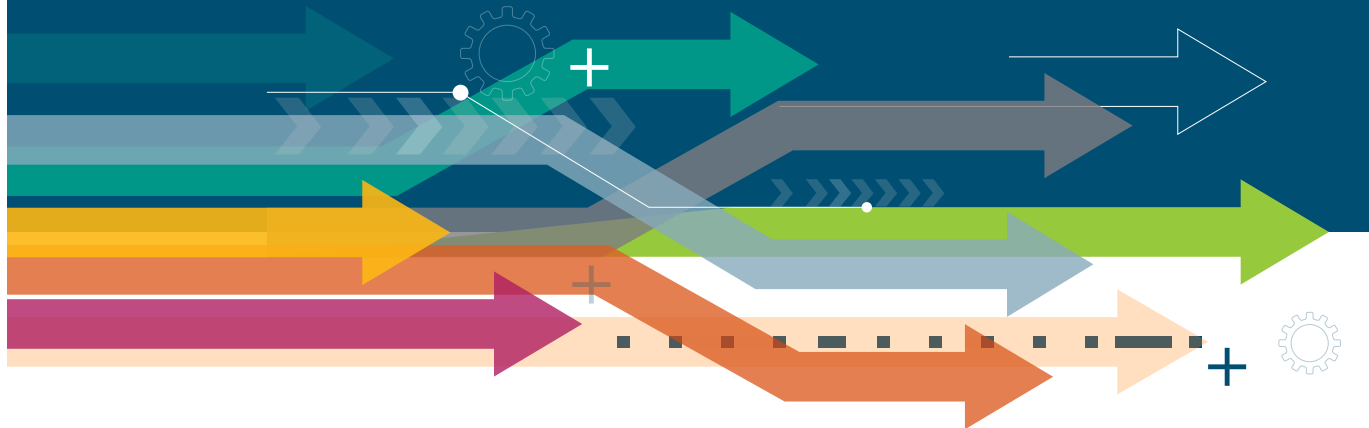
Barth, Peter

5 Sat., 5/17-6/14 | 1:45-3:45 p.m.

In Person, Room TBD

PURSUIT LAB

College & Career Prep for Students with Disabilities



The Pursuit Lab empowers students with disabilities by providing pre-employment transition services. Students are eligible if they:

- are 14-21 years of age
- have a documented disability, a 504 Plan, or an IEP
- enrolled in a secondary, post-secondary or other recognized educational program

Services

Job-Readiness Workshops in High Schools

Email pursuit@edmonds.edu to register.

Job Site Tours

Learn self-advocacy skills and talk with potential employers. Email diana.george@edmonds.edu to register.

Self-Advocacy Classes & Workshops at Edmonds College

Get ready for college and your future career! Attend in-person or online, leave with a resume in hand. Visit edmonds.edu/pursuit-registration to explore our offerings and register.

Connections to Internships

We provide referrals to qualified students who are involved in the Pursuit Lab.

Contact Us

Schools interested in services, please contact Joy Kramer: joy.kramer@dshs.wa.gov

For more information please contact Diana George: diana.george@edmonds.edu | 425.640.1684

The Pursuit Lab is made possible by a grant from the Division of Vocational Rehabilitation of the Washington Department of Social and Health Services.



Washington State
Department of Social
& Health Services

Transforming lives

Division of Vocational Rehabilitation

Learn More
edmonds.edu/pursuit





THE FACILITY MAKERSPACE

Welcome to your 11,000 ft² innovation sandbox with access to all the tools, training, and community you need to turn your thoughts into things. Dive into a new skill, and we'll have you up and running in 2 hours. Free tour every Tuesday at 6 p.m..

RENTAL TOOLS AND WORKSPACES

DESIGN LAB

Eight computer workstations with CAD software (Fusion 360, V-Carve, Rhino, Solidworks). NextEngine 3D scanners. Small electronics workstation. Plus Microsoft Office and solitaire.

RAPID PROTO LAB

Two ULS laser cutters. Ultimaker 5, TAZ 6, Form 2, and Elegoo 3D printers, TAZ 6 3D printers.

COMPOSITES LAB

Ten vacuum bagging stations and access to degassing chambers and a curing oven. Three vacuum molding units. Injection molding.

MACHINE TECH

Large format computer-controlled CNC router, waterjet, knee mill, manual mill, engine lathe, and toolroom mill.

METAL SHOP

Drill presses, metal bandsaw, horizontal bandsaw, shear, brake, bench grinder, angle grinders, deburring tank, and a variety of hand tools.

WOODSHOP

Table saw, compound miter saw, bandsaw, wood lathe, router table, jointer planer, drill presses, jig saw, sanding and shaping, as well as various hand tools.

FLEX SPACE

MIG welding rigs, fabrication tables, kilns, large format workspace, garage door access, industrial sewing machine, class and demo area.

TRAINING OPTIONS

ORIENTATIONS

Our 2-hour orientations are designed to get you safely operating equipment as quickly as possible with small class sizes and a regular schedule rotation. Orientations are required before you can book equipment. Available for the following equipment:

- 3D Printers
- CNC Router
- Laser Cutter
- Introduction to CAD
- Small Electronics and Embedded Systems
- Manual Lathe
- Manual Mill
- Mig Welder
- Vacuum Bagging
- Wood Turning
- Woodshop
- Sewing and Pattern Making
- Youth Robotics and AI

PERSONAL TRAINING

Looking for flexibility and personal attention? Our personal training sets up instructors and programming to fit your particular needs, and progresses at your own pace, with checkouts completed as you move forward.

INTENSIVES

TIME TO DIG DEEPER?

Orientations are vetting classes designed to give you just what you need to work safely in the makerspace. Our Intensives provide a wide variety of options to push yourself forward, from 2-hour Introduction classes focusing on the theory behind specific tools to hands-on Workshops that can run anywhere from 2 hours to 8 weeks or more.

Open: Tuesday - Thursday 3-9 p.m., plus the second Saturday of each month, 10 a.m.-4 p.m.

Expand your possibilities, push. Push your potential, and bring. Bring your ideas to life. It's time to go to work.

THE FACILITY MAKERSPACE

6606 196th St. SW,
Lynnwood, WA 98036

www.facilitymade.com

maker.space@edmonds.edu

EDMONDS COLLEGE
20000 68th Ave. W, Lynnwood, WA 98036
425.640.1459 | edmonds.edu

NON PROFIT ORG
US POSTAGE PAID
PERMIT 66
LYNNWOOD, WA

ECRWSS Postal Customer

EDMONDS COLLEGE CAMPUS

-  MakerSpace (Monroe Hall)
6606 196th St. SW, Lynnwood, WA 98036
-  SQL: Snoqualmie Hall
20022 68th Ave. W, Lynnwood, WA 98036
-  MDL: Meadowdale Hall
20128 68th Ave. W, Lynnwood, WA 98036
-  MIC: Mill Creek Hall
20130 68th Ave. W, Lynnwood, WA 98036
-  SNH: Snohomish Hall
20226 68th Ave. W, Lynnwood, WA 98036

DIRECTIONS AND PARKING

Parking is free for students. Community Education students attending on-campus classes will be emailed a parking permit to print and display for classes each quarter. Please use the QR code to see a campus map. edmonds.edu/campus-map

