



Universidad  
de Navarra

ISSA. APPLIED  
MANAGEMENT

# #PassionFor Management

**FACT SHEET  
2021-2022**

**ISSA.EDU**

# #ManagementIsEverywhere

ISSA School of Applied Management is a pioneer faculty in Spain providing university training to work in the management field both locally and internationally. Today we offer a trilingual program where 50+ partners make this possible. With a strong international character and humanistic perspective, we strive to develop professionals for the future. Established in 1963, we are the only University that offers a Bachelor degree in the field of Applied Management. More than 3.000 students passed through the ISSA classrooms and they work in all professional levels and industries.

## GENERAL INFORMATION

**University Name**  
Universidad de Navarra

**University Website**  
www.unav.edu

**School Website**  
www.issa.edu

**Contact information**  
ISSA School of  
Applied Management  
Universidad de Navarra  
31009 Pamplona (Spain)  
Telephone: +34 948 425 634  
info-issa@unav.es

### 01 DEADLINES AND PROCEDURES

#### NOMINATION DEADLINE

**Fall**  
April 1st

**Spring**  
September 15th

→ Nominations have to be submitted online through a link which will be sent to all partners Institutions.

#### APPLICATION DEADLINE

**Fall**  
May 1st

**Spring**  
October 15th

#### APPLICATION PROCEDURES

Application materials and information will be sent by the International Relations Office of the ISSA School of Applied Management directly to the nominated student.

#### APPLICATION DOCUMENTS

The application guide as well as a video miUNAV tutorial is available here.

<https://www.unav.edu/en/web/issa-school-of-applied-management/alumnos/programas-de-intercambio/incoming>

### 02 LANGUAGE OF INSTRUCTION

**LANGUAGE OF INSTRUCTION**  
**Spanish and English**

#### LANGUAGE REQUIREMENTS

Studying at ISSA requires a minimum level of B1-B2 Spanish and English. Although it is not mandatory, a minimum level of French or German is recommended.

#### FRENCH OR GERMAN

During your study period at ISSA it is possible to take French and/or German lessons to improve your language level as part of the exchange program.

#### SPANISH LESSONS (ILCE)

**Spanish Language Courses** are available for exchange students during the semester.

→ [www.unav.edu/en/web/instituto-de-lengua-y-cultura-espanolas/estudios/cursos-semestrales](http://www.unav.edu/en/web/instituto-de-lengua-y-cultura-espanolas/estudios/cursos-semestrales)

#### Intensive Spanish Summer Course in August (optional)

The cost is not included in the exchange agreement.

### 03 IMPORTANT TERM DATES

#### FALL 2021

September 1st -  
December 21st 2021

**Exams**  
December 4th - 21st 2021

**Orientation Days Begin**  
August 24th 2021

**Expected Arrival Date**  
August 22nd 2021

#### SPRING 2022

January 10th - May 19th 2022

**Exams**  
May 2nd - 19th 2022

**Orientation Days begin**  
January 11th 2022

**Expected Arrival Date**  
January 8th 2022

#### RETAKE EXAMS

June 9th - 30th 2022

#### VACATIONS

**Winter/Christmas**  
December 22nd 2021 -  
January 9th 2022

**Spring/Easter**  
April 11th - April 23rd 2022

## FACTS & FIGURES

### #1

*THE UNIVERSITY OF NAVARRA IS THE ONLY UNIVERSITY IN SPAIN TO OFFER A BACHELOR DEGREE IN APPLIED MANAGEMENT.*

---

### #1

*THE UNIVERSITY OF NAVARRA COUNTS THE HIGHEST EMPLOYABILITY RATE IN SPAIN, ACCORDING TO THE QS EMPLOYABILITY RANKING.*

---

### #3

*THE UNIVERSITY OF NAVARRA HAS BEEN HONOURED AS THE 3RD BEST UNIVERSITY IN EUROPE IN TEACHING, BY THE TIMES HIGHER EDUCATION EUROPEAN TEACHING RANKING.*

---

### 26%

*OF STUDENTS AT THE UNIVERSITY OF NAVARRA ARE INTERNATIONAL STUDENTS.*

---

### 35%

*OF THE ISSA FACULTY CONSISTS OF INTERNATIONAL PROFESSORS.*

---

### 600+

*EXCHANGE STUDENTS COME ANNUALLY TO OUR CAMPUSES.*

---

## ORIENTATION

The International Relations Office of the University of Navarra will host orientation activities for all international students (campus tour, visit to the library and other facilities, explore the city of Pamplona and a trip to San Sebastián). Additional activities and trips are organized throughout the year.

## 04 LEARNING EXPECTATIONS

### PROJECT BASED LEARNING

ISSA implements a new learning methodology in which students acquire an active role that favors academic motivation. Students, organized in teams, carry out a project every semester at a collaborating company.

---

### CLASS FORMATS

- Project Based Learning
  - Lecture/Discussion courses
  - Exams, Personal Dissertations and Oral Presentations
- 

### ATTENDANCE

Attendance is mandatory and often taken into account for the final grade.

---

### PARTICIPATION

Participation can count for up to 30% of the final grade.

---

### GRADING

**Grades range from 0-10, with 10 as the highest grade, and 5 as the passing grade.**

Pass = 5, Good = 6-7, Very Good = 8, Excellent = 9, Honors = 10

---

### EXAMINATIONS

Midterm Examinations are common, Final Examinations standard.

→ Both regular semester and retake exams are compulsory at the University of Navarra.



## 05 PERSONAL APPROACH

### BUDDY PROGRAM

There is a buddy program available for all of the exchange students at ISSA School of Applied Management. The online registration form and additional information will be sent to all exchange students who are accepted to ISSA.

---

### ACADEMIC MENTORING

Students are given academic advisement throughout the semester. Professors are available during office hours. Tutors and extra assistance can be arranged.

---

### INTERNATIONAL RELATIONS SERVICE

#### Head of International Relations

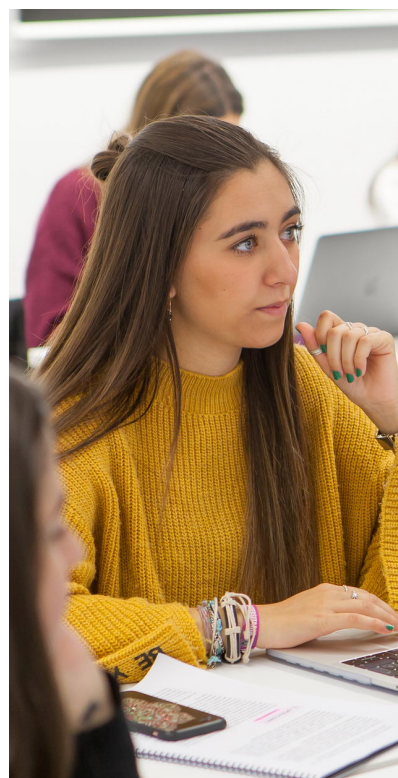
Mr. Antonio María Fernández  
amfernandez@unav.es

#### Academic Coordinator

Prof. Michelle Gaisoa  
mgaisoa@unav.es

#### International Coordinator

Mrs. Idurre Iturralde  
idurrei@unav.es



# STUDENT SERVICES & LIVING COST

## STUDENTS SERVICES AVAILABLE

### Health Insurance. Mandatory Insurance

Students must have adequate coverage before arrival.

Students must provide proof of health insurance. This is the responsibility of the student.

The University of Navarra provides health insurance coverage for students.  
<https://www.unav.edu/en/alumnos/international-students/healthcare>

### Accommodations

The University of Navarra Housing Office provides information and advice about the different types of housing available. However, each student is responsible for making their own housing arrangement.

### International Student Services

The International Relations Office of the University of Navarra hosts events through the semester and is available to assist students with their diverse needs.

[www.unav.edu/web/relaciones-internacionales](http://www.unav.edu/web/relaciones-internacionales)

### Student resources

[www.unav.edu/en/programa-internacional/alumnos-internacionales/student-resources](http://www.unav.edu/en/programa-internacional/alumnos-internacionales/student-resources)

### Computer services

All students are given an e-mail address, Wi-Fi access, and personal access numbers and passwords for all campus computer labs.

### On-Campus Facilities

Cafeterias in all buildings, University Hospital, Sports Complex, Libraries and Reading Rooms, and Copy Centers are available.

### Museum

The University of Navarra Museum is an international center of creative and artistic reflection and interdisciplinary research and teaching.

### Spiritual Support

The University of Navarra offers a Chaplaincy service for all students and staff members. International students are welcome to contact Fr. José Alviar [jalviar@unav.es](mailto:jalviar@unav.es).



@ISSAUNAV



ISSA.EDU



Universidad  
de Navarra

ISSA. APPLIED  
MANAGEMENT